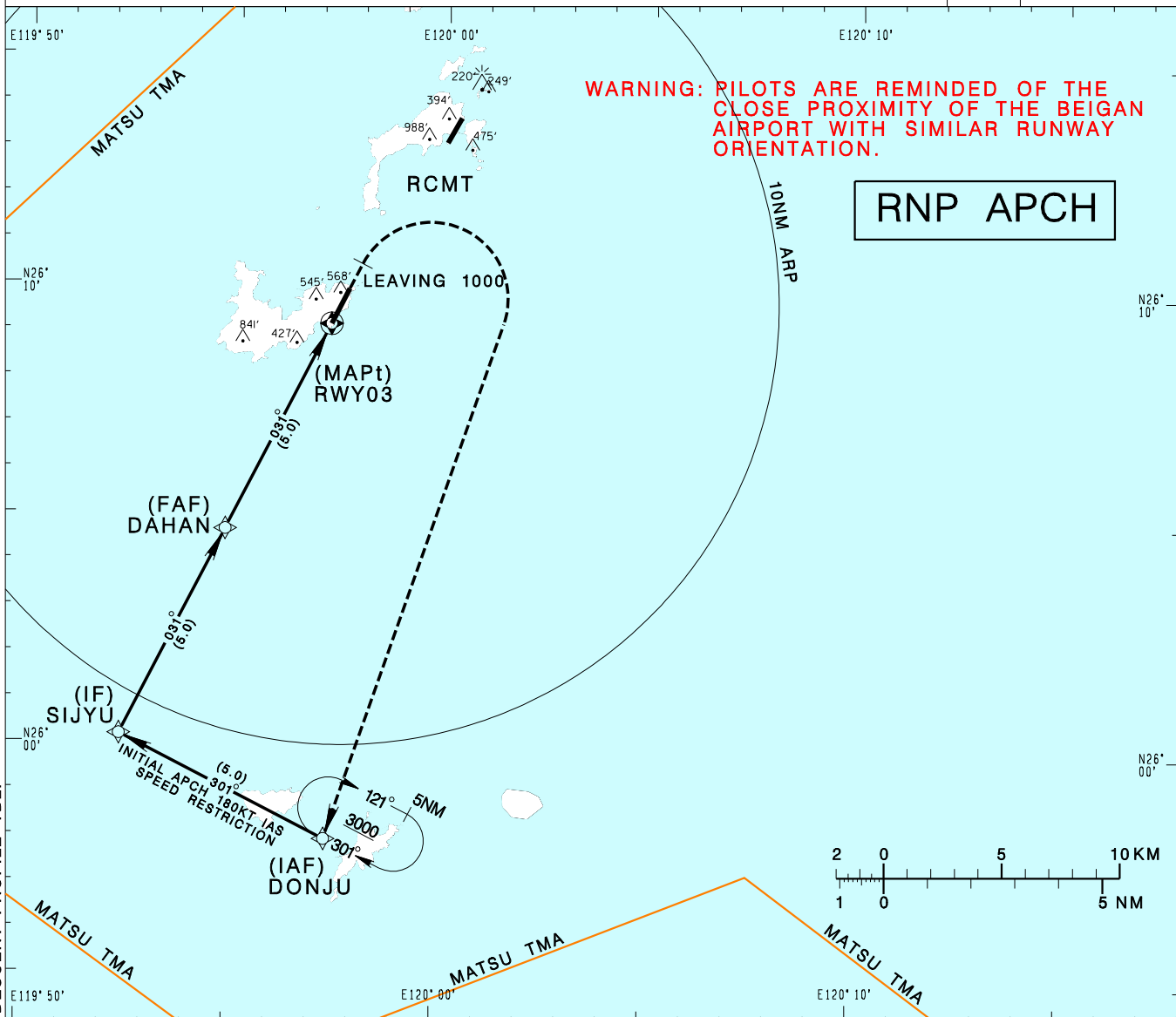


馬祖/南竿機場  
MATSUNANGAN AD

RCFG  
RNP RWY03

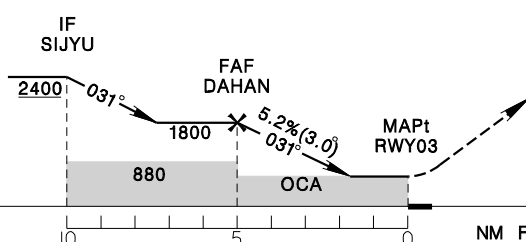
TAIPEI APP 121.0 122.3	NANGAN TWR 118.55	ATIS 127.95	VAR 5° W-2024 ↑	4300' MSA ARP 25NM
Apt Elev: 232'	Rwy03 THR Elev: 221'	Trans Level: FL130		

BEARINGS ARE MAGNETIC; DISTANCES ARE NAUTICAL MILES; ELEVATIONS, HEIGHTS IN FEET  
\* CAA AUTHORIZATION REQUIRED IN ADVANCE



CHANGES: UPDATE MAG VAR; REVISE ADVISORY DESCENT PROFILE TBL.

5NM	4NM	3NM	2NM	DIST to THR03
1800	1550	1230	910	ADVISORY ALT



MISSED APCH:  
CLIMB ON RWY HDG UNTIL LEAVING 1000,  
TURN RIGHT DIRECT TO DONJU,  
CLIMB TO 3000 AND HOLD.

MINIMA (OCA IN FT, VIS IN M, OCH IN FT)		NOTE 1.CAUTION HIGH TERRAIN NEAR THE AIRPORT. 2.CIRCLING NOT AUTHORIZED. 3.STANDARD OBSTRUCTION CLEARANCE IS NOT PROVIDED FOR BALKED LANDING. 4.PROCEDURE NOT AUTHORIZED AT NIGHT. 5.ATC WILL ISSUE DIRECT ROUTE TO IAF FOR APPROACH. APPROACH FROM IF NOT AUTHORIZED. 6.PILOT SHALL EXERCISE WITH CAUTION NOT TO DEVIATE OUT OF TMA BOUNDARY. 7.DME/DME NOT AUTHORIZED.	
CATEGORY	A		B
LNAV	840/3600		619